



## APPENDIX 22

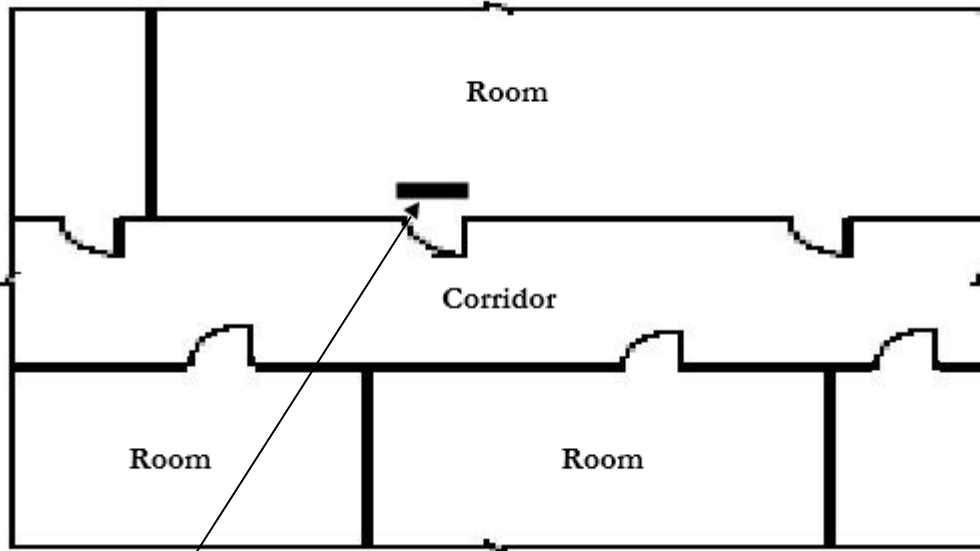
### PROVISION OF EXIT AND DIRECTIONAL SIGNS IN BUILDINGS

- 1 Entrance to every exit on every floor shall be clearly indicated by an exit sign placed over the exit doors. In long corridors, open floor areas, and all situations where the locations of the exits may not be readily visible, directional signs shall be provided to serve as guides from all portions of the corridors or floors.
- 2 For rooms, the guidelines for the provisions of exit sign are as follow:
  - (a) When a room is provided with more than one door, exit signs shall be placed over the exit access doors serving as means of escape.
  - (b) In a room provided with emergency lighting and where the line of sight to the exit access door is obstructed, directional sign shall be provided. When only one exit access door is provided in the room, exit sign is not required at the door.
  - (c) In a room provided with emergency lighting, exit sign is not required if there is only one exit access door.
  - (d) In a room without emergency lighting and:
    - i. If the direct distance from the furthest point in the room to the only exit access door does not exceed 7m, exit sign is not required
    - ii. . If the direct distance from the furthest point in the room to the only exit access door exceeds 7m but does not exceed 13m, exit sign shall be provided over the door. Alternatively, the room can be provided with emergency lighting.
  - (e) When the wall of a room without emergency lighting comprises of not less than 50% glazing and is facing a corridor (with emergency lighting) or external of a building, exit sign over the only exit access door is not required if the furthest point in the room to the exit access door does not exceed 13m.

(See Annex A for the diagrammatic illustrations)

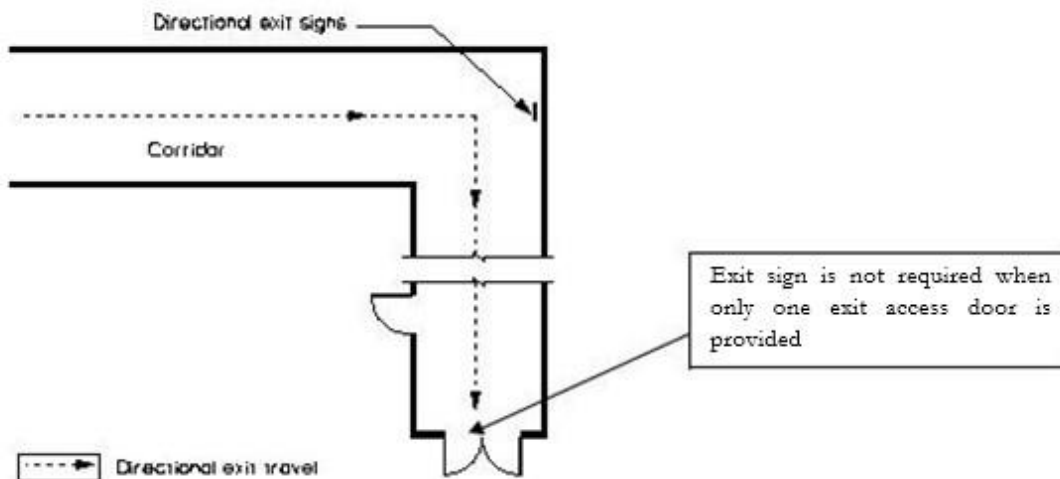


- a. When a room is provided with more than one door, exit signs shall be placed over the exit access doors serving as means of escape



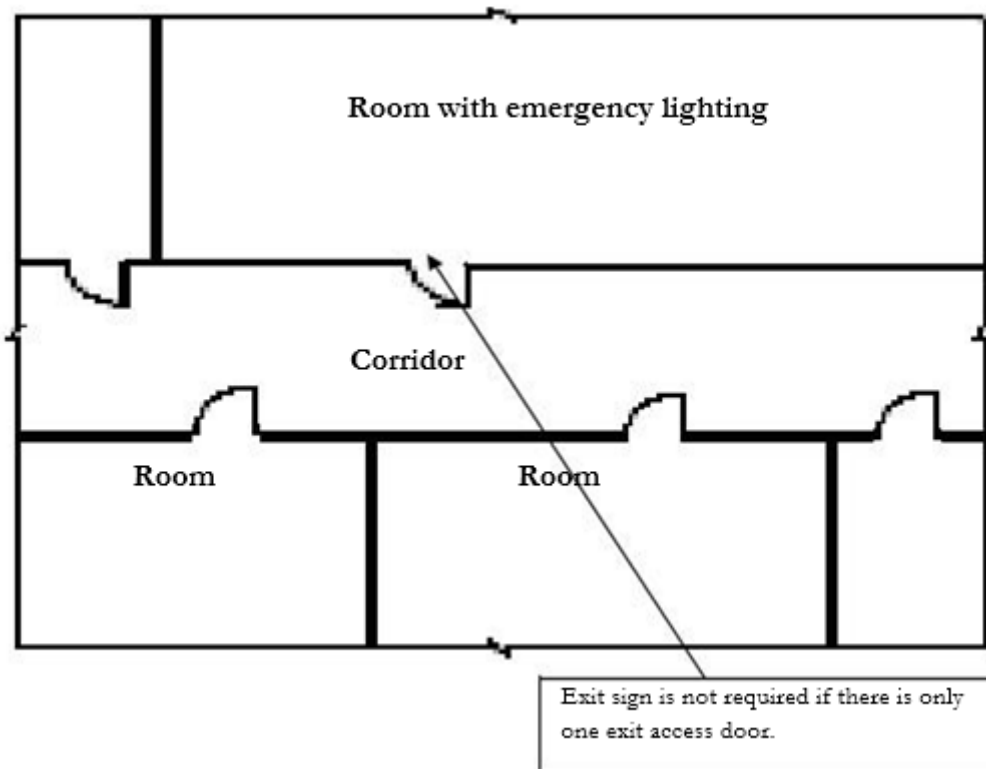
Exit Signs shall be placed over the exit access door serving as means of escape

- b. In a room provided with emergency lighting and where the line of sight to the exit access door is obstructed, directional sign shall be provided. When only one exit access door is provided in the room, exit sign is not required at the door





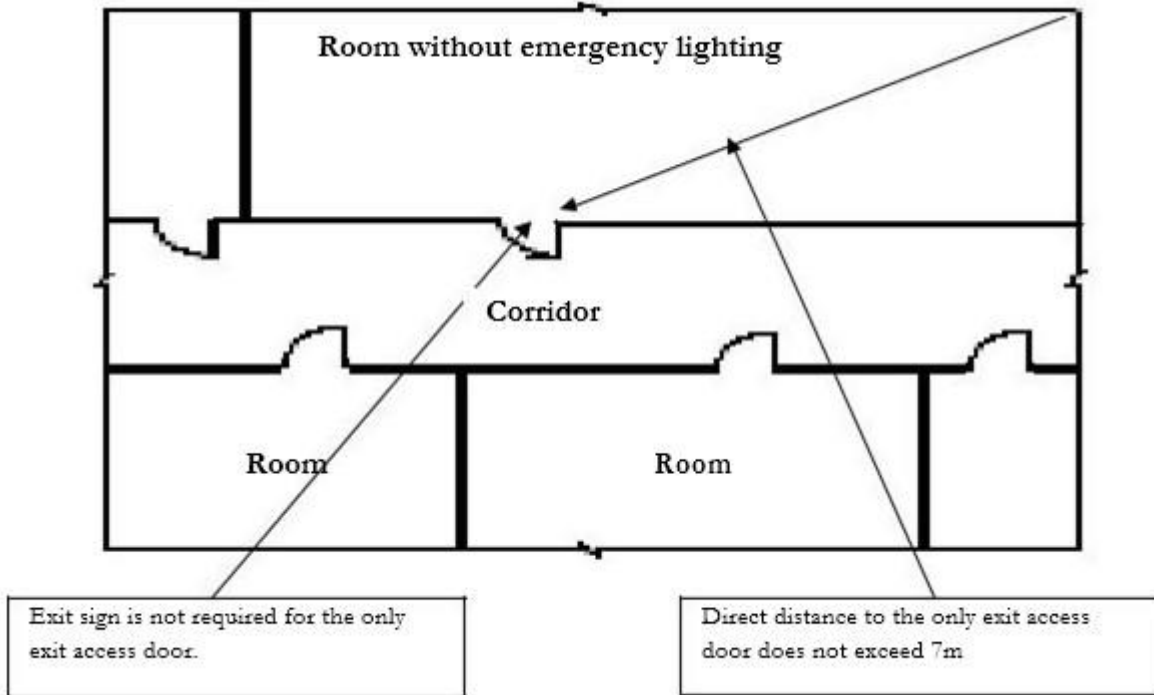
- c. In a room provided with emergency lighting, exit sign is not required if there is only one exit access door





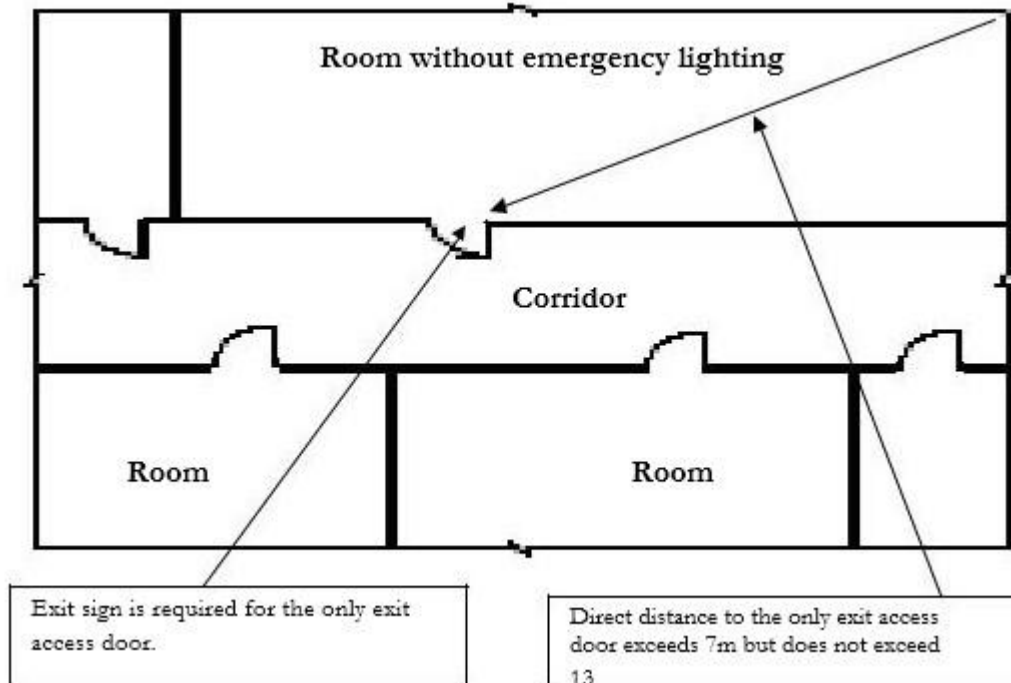
**d. In a room without emergency lighting and:**

**i. If the direct distance from the furthest point in the room to the only exit access door does not exceed 7m, exit sign is not required**





**ii. If the direct distance from the furthest point in the room to the only exit access door exceeds 7m but does not exceed 13m, exit sign shall be provided over the door. Alternatively, the room can be provided with emergency lighting**



**e. When the wall of a room without emergency lighting comprises of not less than 50% glazing and is facing a corridor (with emergency lighting) or external of a building, exit sign over the only exit access door is not required if the furthest point in the room to the exit access door does not exceed 13m**

