



Mauritius

Fire and Rescue Service

Statistical Report 2015

May 2016

FIRE AND RESCUE SERVICE STATISTICAL REPORT – 2015

FOREWORD

This is the third issue of a yearly publication on Fire and Rescue Service statistics prepared by Mauritius Fire and Rescue Service.

Data published in this report relate to the Island of Mauritius and cover latest available information on fire incident, special assistance, fire certificate, fire clearance as well as fire and other emergency safety awareness campaign.

The statistics are based on operational and administrative data collected by the Main Control Room and the Fire Safety Division of the Fire and Rescue Service. The preparation of this report has necessitated the collaboration of the staff of Statistics Mauritius. Its co-operation and assistance are herewith gratefully acknowledged.

It is hoped that the data assembled in this report will be of valuable help to the public in general, particularly to Fire and Rescue planners, National Disaster and Operations Coordination Centre as well as policy makers.

L. Pallen (Mr)
Chief Fire Officer

Mauritius Fire and Rescue Service
Ministry of Local Government
Port Louis
MAURITIUS

May 2016

CONTENTS

	Page
Introduction	3 - 9
 Table	
1.1 Monthly average time taken to reach structural fire location by station, 2015	11
2.1 Number of firecalls and special assistance by station, 2014 and 2015	13
2.2 Number of firecalls and special assistance by district, 2014 and 2015	14
2.3 Number of firecalls and special assistance by month, 2014 and 2015	15
3.1 Number of firecalls by station and type of fire incidents, 2014 and 2015	17
3.2 Number of firecalls by district and type of fire incidents, 2014 and 2015	18
3.3 Number of firecalls by month and type of fire incidents, 2014 and 2015	19
4.1 Number of sugar cane fire by station and damage, 2014 and 2015	20
4.2 Number of sugar cane fire by district and damage, 2014 and 2015	21
4.3 Number of sugar cane fire by month and damage, 2014 and 2015	22
5.1 Number of special assistance attended by station, 2014 and 2015	24
5.2 Number of special assistance attended by district, 2014 and 2015	25
5.3 Number of special assistance attended by month, 2014 and 2015	26
6.1 Number of fire certificate applications received and certificate issued by district, 2014 and 2015	27
6.2 Number of fire clearance applications received and clearance issued by district, 2014 and 2015	28
 Graphs	
Figure	
1 Average time taken to reach structural fire location by station, 2014 and 2015	12
2 Number of firecalls and special assistance by month, 2015	16
3 Damage of sugar cane field by district, 2014 and 2015	23
4 Number of fire and other emergency safety awareness campaigns, 2014 and 2015	29
 Explanatory notes and definitions	31 - 32

FIRE AND RESCUE STATISTICS – 2015

1. Introduction

The Fire and Rescue Statistical Report presents data on fire incidents, special assistance as well as fire and other emergency awareness campaign compiled from administrative data collected by the Main Control Room and the Fire Safety Division of the Fire and Rescue Service.

The data refer to the Island of Mauritius only. The Main Control Room receives all incoming emergency calls in the country, dispatches fire crews to incident location and monitors management of operations on incident grounds.

However, the fire station boundaries may be different from that of district boundaries. Any turn out of firecalls and special assistance cover area beyond the station and district boundaries.

It is hoped that the data and information in this report will be useful to the public in general and in particular to policy makers, planners and researchers.

The report is available on the Mauritius Fire and Rescue Service website at the following link: <http://mfrs.govmu.org/English/Statistics/Pages/default.aspx>, and can be accessed from the Statistics Mauritius website at:

<http://statsmauritius.govmu.org/English/StatsbySubj/Pages/default.aspx>

2. Highlights

- The Mauritius Fire and Rescue Service attended 9,847 fire incidents and special assistance in Mauritius during 2015. This was 1,281 lower (12%) than in 2014.
- The average time taken by the fire crew to reach the incident location improved from 8 minutes in 2014 to 7 minutes in 2015.
- Out of the 6,143 fire outbreak attended in 2015, 54% were outside fire, 34% were sugar cane fire and 10% were structural fire. The number of fire outbreak was 2,226 lower (27%) than the previous year.
- During 2015, the Fire and Rescue Service attended around 3,704 special assistance incidents. This was 945 more (34%) compared to 2014.
- There were 3,704 special assistance attended out of which 30% were pumping due to accumulation of water. Some 595 more turn outs for accumulation of water were registered than in 2014.
- Some 760 applications were received for fire certificate and 1,481 for fire clearance. The number of fire certificate issued with respect to total applications received increase from 687 in 2014 to 840 in 2015. The number of fire clearance issued was 1,373 compared to 1,044 in 2014.
- The Mauritius Fire and Rescue Service undertook 528 public education activities in Mauritius during 2015.

3. Average time taken to reach incident spot

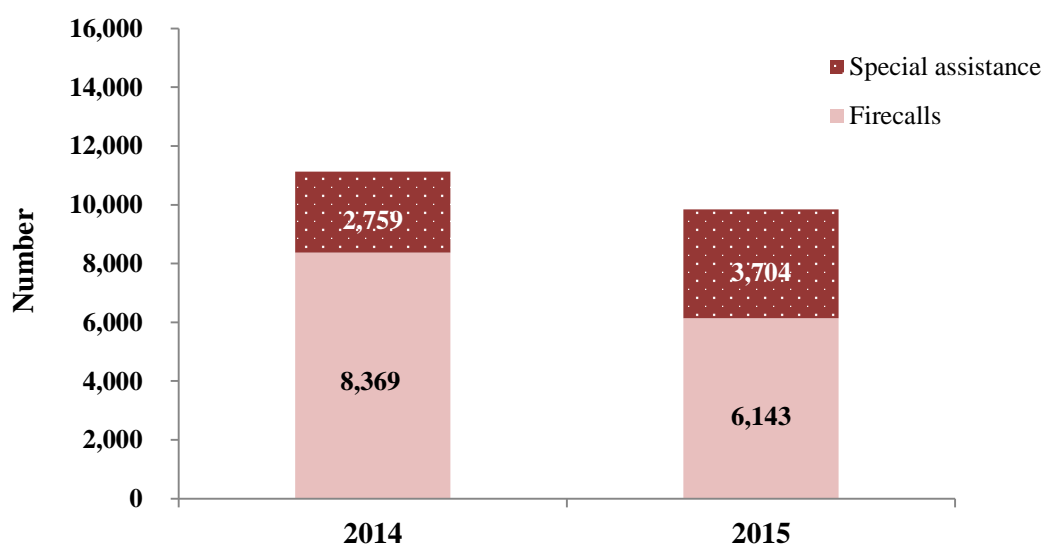
One of the service performance indicators is the time taken to reach an incident location most particularly in case of structural fires where human life may be at stake. The set target is 12 minutes. This indicator enables one to gauge the efficiency and the effectiveness of the Mauritius Fire and Rescue Service to promptly respond to an emergency situation. From data obtained with regards to structural fires for the year 2015, it is observed that on average, the fire crew took approximately 7 minutes to reach the location, compared to 8 minutes in 2014. Average time taken to reach incident places in Mauritius was at par with country such as England with a response time of 7 minutes 45 seconds to dwelling fires.

The time taken by each fire station varies due to the area coverage and the ease of accessibility. The average response time was lower in predominantly urban areas. Port Louis Fire Station took 5 minutes to reach the incident location and for Coromandel Fire Station, it was 6 minutes. St Aubin and Piton Fire Station, being in rural areas, took around one or two minutes above the average time to reach the area of fire.

4. Fire and rescue service statistics

The Mauritius Fire and Rescue Service attended around 9,847 incidents in 2015, with 6,143 turn outs for firecalls and 3,704 for special assistance. Fire incidents accounted for around 62% of the fire and rescue services and special assistance was 38%.

Figure I - Number of firecalls and special assistance, 2014 and 2015



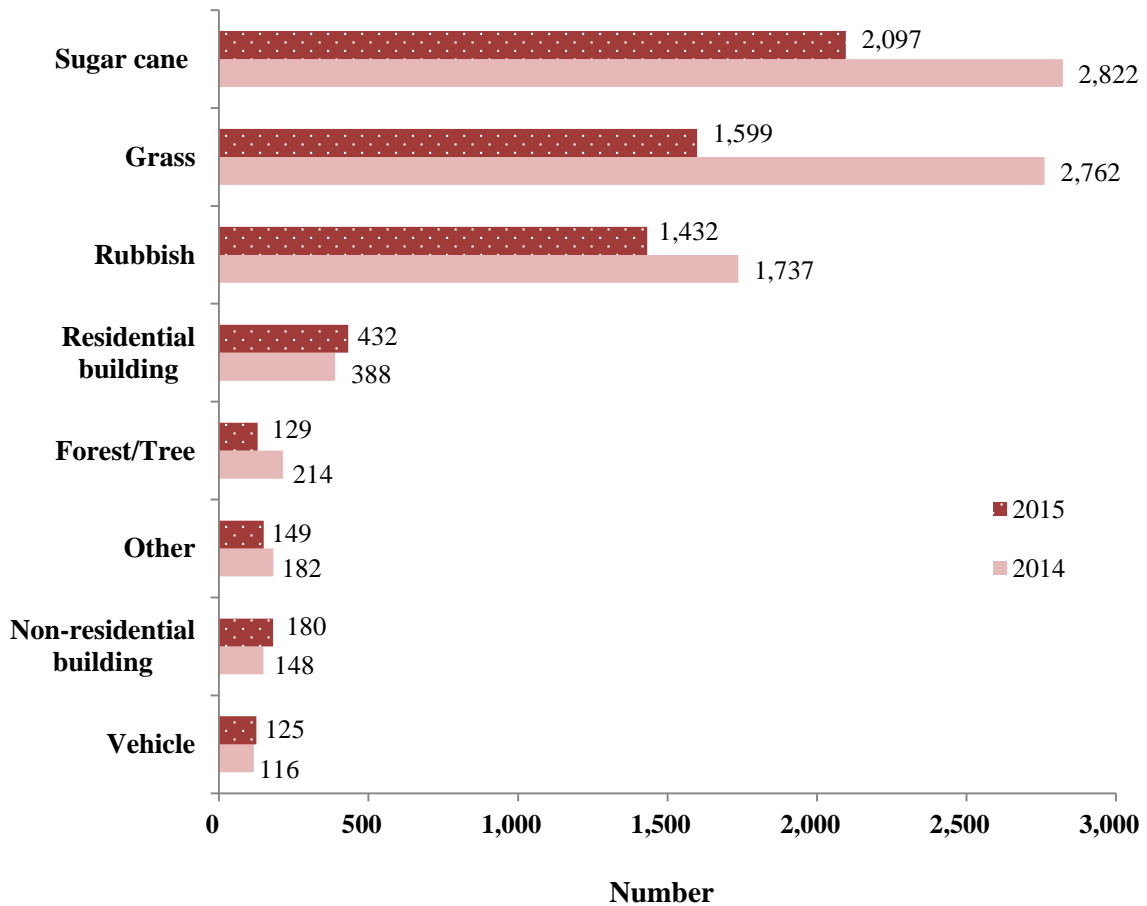
From 2014 to 2015, the number of fire incidents and special assistance attended by the fire stations decreased by 12% from 11,128 to 9,847.

5. Fire outbreak by type of fire incidents

In 2015, out of the 6,143 fire incidents attended, the majority (54%) comprised of outside fire such as grass and rubbish fire followed by sugar cane (34%) and buildings (10%).

A fall of 27% in the number of fire incidents dealt with by fire crews was registered from 8,369 to 6,143. This can be explained mainly by decreases of 42% in grass fires from 2,762 to 1,599 and 40% in forest/trees fires from 214 to 129. Similarly, sugar cane fire went down by 725 (26%) and rubbish fire by 305 (18%). An estimated number of around 9,054 acres of sugar cane field was damaged in 2015 as compared to 16,525 in 2014.

Figure II - Number of firecalls by type of fire incidents, 2014 and 2015



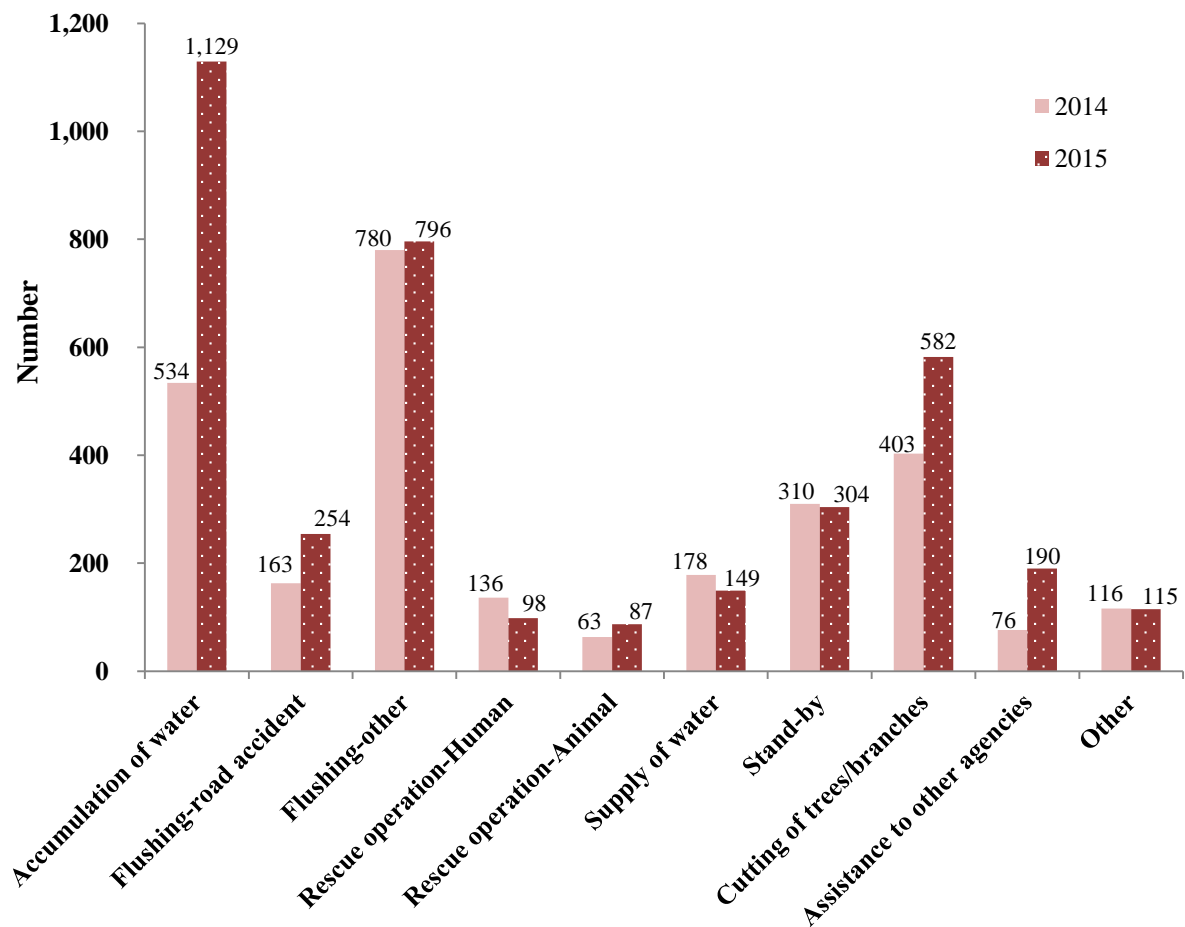
On the other hand, there was a rise of 11% in residential building fires from 388 in 2014 to 432 in 2015. Non-residential building fires increased slightly by 22% from 148 to 180.

6. Special Assistance

In 2015, non-fire incidents which was 3,704, made up of around 38% of all incidents attended by the fire and rescue service. There were 1,129 turn outs effected for pumping of accumulation of water, 1,050 for flushing of roads and other places, and 582 for cutting of trees or branches among others.

From 2014 to 2015, the number of special assistance attended went up by 34% from 2,759 to 3,704. The number of pumping due to accumulation of water during torrential rains dealt with almost doubled from 534 in 2014 to 1,129 in 2015, representing an increase of around 111%. Flushing of roads after accidents also went up by 56% from 163 to 254.

Figure III - Number of special assistance attended, 2014 and 2015

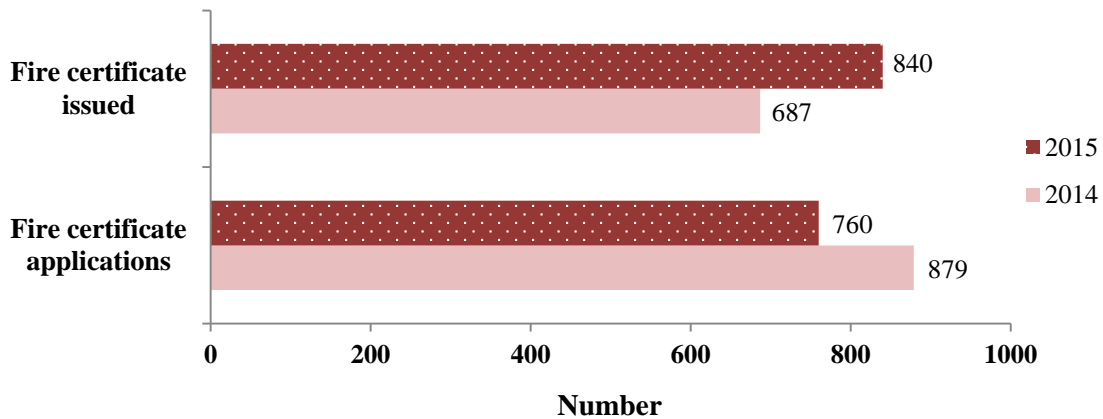


7. Application of fire certificate and fire clearance received and issued

Fire certificate and fire clearance are issued only upon receipt of applications. Inspections are carried out to see whether the premises satisfy the fire safety norms. If those premises satisfy the fire safety norms, then fire certificate or fire clearance are issued upon receipt of an appropriate fee.

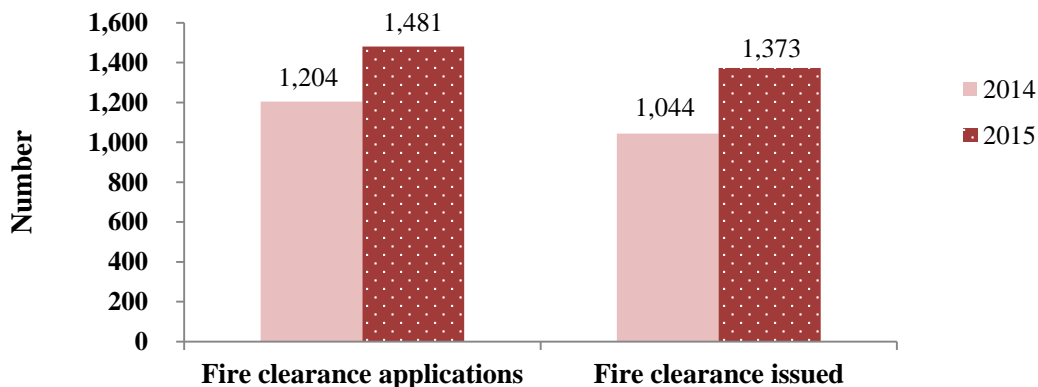
In 2015, some 760 applications were received in respect of buildings, filling stations, fuel depots, and other fire hazardous premises throughout the island for the purpose of fire certification. There were 840 fire certificates issued out of those applications received. An increase of 22% in the number of certificates issued was registered in 2015, up from 687 in 2014.

Figure IV - Number of fire certificate applications received and certificate issued, 2014 and 2015



Applications received for fire clearance as regards tourist residence, guest house, stores where insecticide, pesticide, herbicide and LPG are kept were 1,481 in 2015 while fire clearance issued were 1,373. Compared to 2014, the number of clearance issued rose by 32% from 1,044 to 1,373.

Figure V - Number of fire clearance applications received and clearance issued, 2014 and 2015



8. Public education activities

In 2015, the Mauritius Fire and Rescue Service undertook 528 awareness campaigns. These campaigns were conducted with respect to fire and other emergency safety measures through talks, lectures, demonstrations and broadcast to the population. From 2014 to 2015, an increase of nearly 47 (10%) of such activities was registered.

Contact person:

Mrs F. Mohamud, Senior Statistical Officer

Mauritius Fire and Rescue Service

14, Deschartes Street, Port-Louis

Email: fmohamud@govmu.org, su_mfrs@govmu.org

Tel: (230) 210-8885 ext 223

Statistics Mauritius

Ministry of Finance and Economic Development

Port Louis

May 2016

Table 1.1 - Monthly average time taken to reach structural fire location by station, 2015

Fire Station	Average time taken - Minutes												
	Year 2015	Month											
		January	February	March	April	May	June	July	August	September	October	November	December
Port Louis	5	4	5	5	5	4	5	5	3	4	4	6	4
Triolet	7	7	5	7	9	6	9	5	9	6	7	8	7
Piton	8	-	10	8	10	9	11	10	6	8	7	9	8
Flacq	7	7	6	8	4	4	2	6	10	12	7	12	11
Mahebourg	8	5	6	4	5	-	13	8	11	11	3	18	8
Saint Aubin	9	8	8	8	9	-	8	8	35	8	8	3	4
Coromandel	6	5	7	4	5	8	6	6	6	7	7	7	6
Quatre Bornes	8	7	9	9	9	6	6	8	10	8	7	8	6
Curepipe	7	7	9	8	4	9	6	6	4	8	8	11	7
Tamarin	7	6	4	6	9	15	12	-	8	-	3	14	10
Overall Average	7												

Figure 1 - Average time taken to reach structural fire location by station, 2014 and 2015

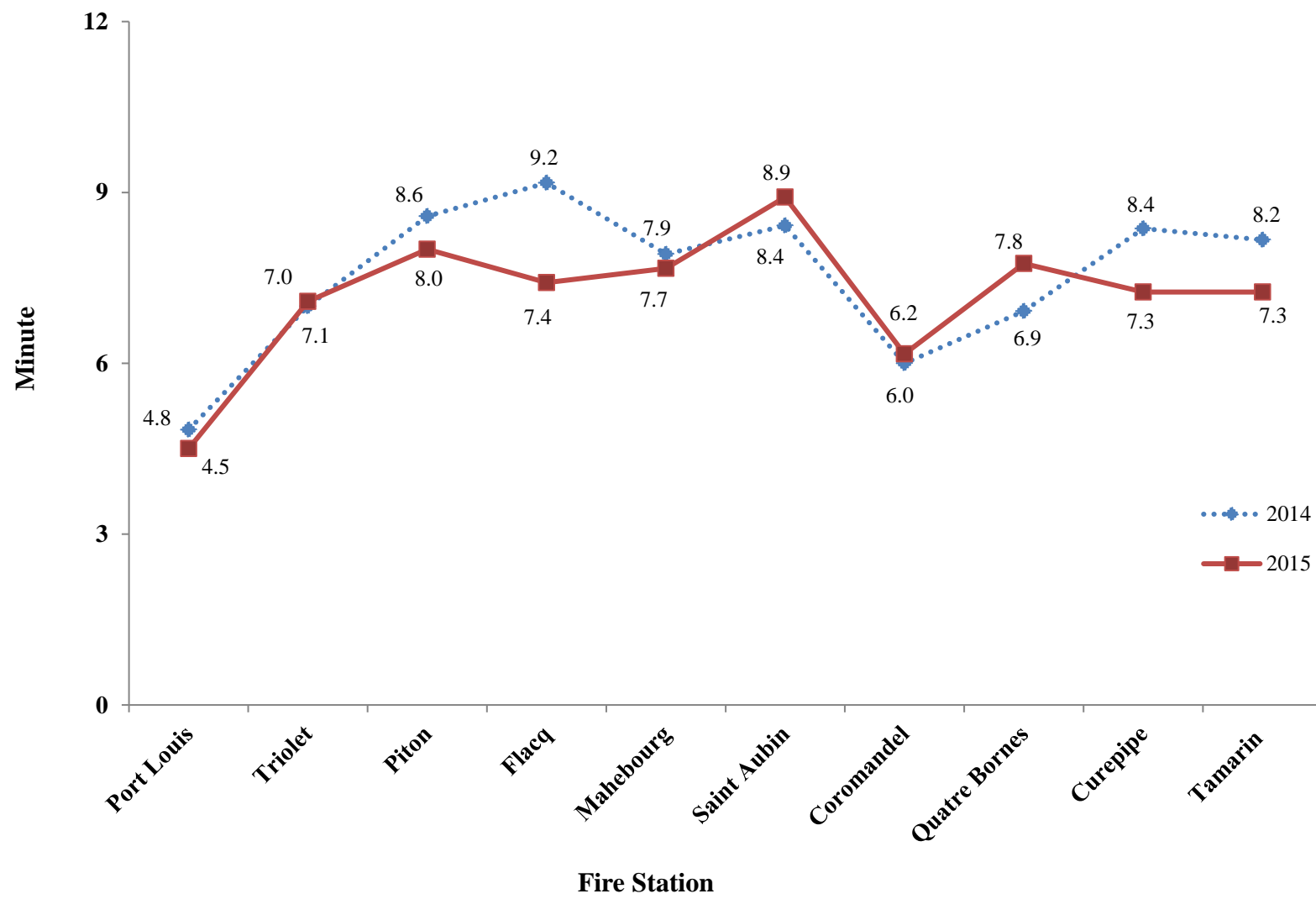


Table 2.1 - Number of firecalls and special assistance by station, 2014 and 2015

Fire Station	2014			2015		
	Total	Firecalls	Special assistance	Total	Firecalls	Special assistance
Port Louis	1,813	1,321	492	1,554	1,015	539
Triolet	1,243	1,018	225	1,003	709	294
Piton	1,133	906	227	944	620	324
Flacq	1,129	888	241	961	635	326
Mahebourg	699	547	152	774	541	233
Saint Aubin	600	386	214	585	322	263
Coromandel	1,840	1,403	437	1,515	1,014	501
Quatre Bornes	1,025	733	292	1,022	561	461
Curepipe	1,105	749	356	984	482	502
Tamarin	541	418	123	505	244	261
Total	11,128	8,369	2,759	9,847	6,143	3,704

Table 2.2 - Number of firecalls and special assistance by district, 2014 and 2015

District	2014			2015		
	Total	Firecalls	Special assistance	Total	Firecalls	Special assistance
Port Louis	1,318	892	426	1,227	741	486
Pamplemousses	1,998	1,605	393	1,529	1,112	417
Rivière du Rempart	1,199	1,037	162	959	616	343
Flacq	1,231	986	245	1,010	673	337
Grand Port	902	702	200	955	643	312
Savanne	621	380	241	587	310	277
Plaine Wilhems	1,884	1,182	702	1,724	815	909
Moka	511	346	165	493	314	179
Black River	1,464	1,239	225	1,363	919	444
Total	11,128	8,369	2,759	9,847	6,143	3,704

Table 2.3 - Number of firecalls and special assistance by month, 2014 and 2015

Month	2014			2015		
	Total	Firecalls	Special assistance	Total	Firecalls	Special assistance
January	490	171	319	914	171	743
February	477	183	294	585	162	423
March	597	295	302	918	228	690
April	582	337	245	511	333	178
May	597	432	165	551	337	214
June	1,227	1,082	145	579	378	201
July	1,199	1,036	163	754	572	182
August	1,236	1,057	179	899	742	157
September	1,261	1,111	150	1,413	1,207	206
October	1,561	1,374	187	1,107	868	239
November	1,047	877	170	838	622	216
December	854	414	440	778	523	255
Total	11,128	8,369	2,759	9,847	6,143	3,704

Figure 2 - Number of firecalls and special assistance by month, 2015

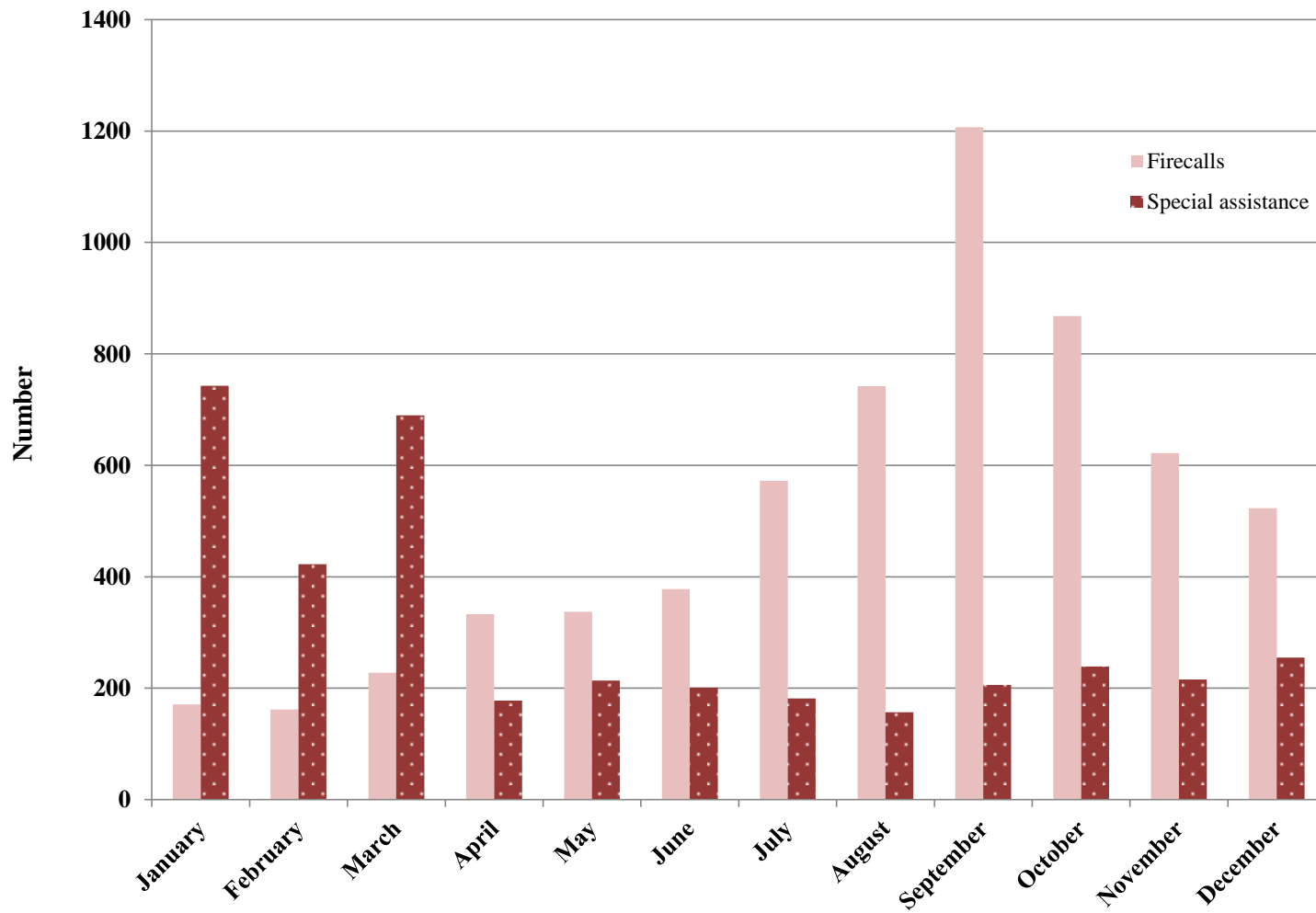


Table 3.1 - Number of firecalls by station and type of fire incidents, 2014 and 2015

Year	Fire Station	Total	Residential building	Non-residential building	Vehicle	Sugar cane	Outside fire			
							Forest/Tree	Grass	Rubbish	Other
2014	Port Louis	1,321	61	33	17	155	38	584	392	41
	Triolet	1,018	23	15	13	400	21	308	214	24
	Piton	906	30	6	8	494	24	223	107	14
	Flacq	888	50	12	13	583	23	105	91	11
	Mahebourg	547	27	4	3	350	20	65	69	9
	Saint Aubin	386	26	7	5	261	7	39	37	4
	Coromandel	1,403	45	16	10	121	29	811	347	24
	Quatre Bornes	733	43	19	16	128	18	264	229	16
	Curepipe	749	67	28	23	283	24	157	142	25
	Tamarin	418	16	8	8	47	10	206	109	14
	Total	8,369	388	148	116	2,822	214	2,762	1,737	182
2015	Port Louis	1,015	71	46	27	64	20	400	357	30
	Triolet	709	37	16	14	314	14	168	131	15
	Piton	620	35	13	2	334	13	129	83	11
	Flacq	635	52	9	10	409	13	61	63	18
	Mahebourg	541	18	4	8	353	12	59	80	7
	Saint Aubin	322	21	7	5	220	3	17	40	9
	Coromandel	1,014	49	28	17	74	28	481	322	15
	Quatre Bornes	561	70	27	17	103	9	145	177	13
	Curepipe	482	63	20	20	190	10	52	108	19
	Tamarin	244	16	10	5	36	7	87	71	12
	Total	6,143	432	180	125	2,097	129	1,599	1,432	149

Table 3.2 - Number of firecalls by district and type of fire incidents, 2014 and 2015

Year	District	Total	Residential building	Non-residential building	Vehicle	Sugar cane	Outside fire			
							Forest/Tree	Grass	Rubbish	Other
2014	Port Louis	892	47	28	14	-	27	389	349	38
	Pamplemousses	1,605	45	18	18	719	36	483	261	25
	Rivière du Rempart	1,037	24	10	6	446	26	354	153	18
	Flacq	986	48	11	13	661	30	118	95	10
	Grand Port	702	33	6	7	443	22	71	107	13
	Savanne	380	28	8	5	252	9	40	33	5
	Plaine Wilhems	1,182	114	42	34	139	33	384	392	44
	Moka	346	10	10	10	80	9	150	71	6
	Black River	1,239	39	15	9	82	22	773	276	23
	Total	8,369	388	148	116	2,822	214	2,762	1,737	182
2015	Port Louis	741	61	41	25	1	17	268	300	28
	Pamplemousses	1,112	47	18	14	490	18	299	211	15
	Rivière du Rempart	616	41	16	6	252	12	174	101	14
	Flacq	673	48	9	10	443	17	68	60	18
	Grand Port	643	23	4	12	420	12	64	99	9
	Savanne	310	19	7	4	216	3	15	37	9
	Plaine Wilhems	815	125	52	31	95	19	160	298	35
	Moka	314	24	11	12	84	5	77	97	4
	Black River	919	44	22	11	96	26	474	229	17
	Total	6,143	432	180	125	2,097	129	1,599	1,432	149

Table 3.3 - Number of firecalls by month and type of fire incidents, 2014 and 2015

Year	Month	Total	Residential building	Non-residential building	Vehicle	Sugar cane	Outside fire			
							Forest/Tree	Grass	Rubbish	Other
2014	January	171	32	11	9	17	7	22	55	18
	February	183	32	8	8	14	7	36	68	10
	March	295	32	13	9	55	9	73	83	21
	April	337	30	12	6	90	7	107	73	12
	May	432	33	9	9	133	10	130	95	13
	June	1,082	30	10	12	350	14	490	160	16
	July	1,036	34	15	9	366	23	432	142	15
	August	1,057	35	19	7	439	16	353	174	14
	September	1,111	30	13	13	477	40	327	204	7
	October	1,374	38	16	12	489	45	459	295	20
	November	877	26	10	10	256	21	270	266	18
	December	414	36	12	12	136	15	63	122	18
	Total	8,369	388	148	116	2,822	214	2,762	1,737	182
2015	January	171	37	15	5	19	3	14	57	21
	February	162	32	12	11	18	6	12	61	10
	March	228	32	18	7	55	5	29	65	17
	April	333	31	11	7	85	11	72	102	14
	May	337	23	11	12	75	9	102	96	9
	June	378	36	11	9	158	7	84	67	6
	July	572	32	18	8	225	11	156	113	9
	August	742	32	15	9	322	15	202	137	10
	September	1,207	33	22	16	465	15	418	223	15
	October	868	50	22	12	313	17	244	195	15
	November	622	47	14	10	230	15	150	143	13
	December	523	47	11	19	132	15	116	173	10
	Total	6,143	432	180	125	2,097	129	1,599	1,432	149

Table 4.1 - Number of sugar cane fire by station and damage, 2014 and 2015

Year	Fire Station	Total		Standing cane		Young shoot	
		Number of sugar cane fire	Damage of sugar cane field (Estimated acres)	Number of sugar cane fire	Damage of sugar cane field (Estimated acres)	Number of sugar cane fire	Damage of sugar cane field (Estimated acres)
2014	Port Louis	155	1,310	140	1,181	15	129
	Triolet	400	3,285	361	3,158	39	127
	Piton	494	2,423	453	2,278	41	145
	Flacq	583	2,193	524	2,045	59	148
	Mahebourg	350	2,336	321	2,191	29	145
	Saint Aubin	261	1,048	230	916	31	132
	Coromandel	121	834	108	789	13	45
	Quatre Bornes	128	1,120	116	1,050	12	70
	Curepipe	283	1,520	242	1,326	41	194
	Tamarin	47	456	42	432	5	24
	Total	2,822	16,525	2,537	15,366	285	1,159
2015	Port Louis	64	412	52	383	12	29
	Triolet	314	1,346	272	1,150	42	196
	Piton	334	1,171	263	990	71	181
	Flacq	409	1,381	318	1,180	91	201
	Mahebourg	353	1,529	280	1,377	73	152
	Saint Aubin	220	974	161	837	59	137
	Coromandel	74	499	62	435	12	64
	Quatre Bornes	103	725	91	700	12	25
	Curepipe	190	828	144	727	46	101
	Tamarin	36	189	30	168	6	21
	Total	2,097	9,054	1,673	7,947	424	1,107

Table 4.2 - Number of sugar cane fire by district and damage, 2014 and 2015

Year	District	Total		Standing cane		Young shoot	
		Number of sugar cane fire	Damage of sugar cane field (Estimated acres)	Number of sugar cane fire	Damage of sugar cane field (Estimated acres)	Number of sugar cane fire	Damage of sugar cane field (Estimated acres)
2014	Port Louis	-	-	-	-	-	-
	Pamplemousses	719	5,511	655	5,254	64	257
	Rivière du Rempart	446	2,327	405	2,119	41	208
	Flacq	661	2,709	594	2,527	67	182
	Grand Port	443	2,741	405	2,533	38	208
	Savanne	252	1,199	220	1,061	32	138
	Plaine Wilhems	139	857	116	792	23	65
	Moka	80	647	70	596	10	51
	Black River	82	534	72	484	10	50
	Total	2,822	16,525	2,537	15,366	285	1,159
2015	Port Louis	1	1	1	1	-	-
	Pamplemousses	490	2,122	399	1,811	91	311
	Rivière du Rempart	252	920	215	810	37	110
	Flacq	443	1,534	342	1,309	101	225
	Grand Port	420	1,779	332	1,604	88	175
	Savanne	216	972	156	830	60	142
	Plaine Wilhems	95	549	80	494	15	55
	Moka	84	445	69	422	15	23
	Black River	96	732	79	666	17	66
	Total	2,097	9,054	1,673	7,947	424	1,107

Table 4.3 - Number of sugar cane fire by month and damage, 2014 and 2015

Year	Month	Total		Standing cane		Young shoot	
		Number of sugar cane fire	Damage of sugar cane field (Estimated acres)	Number of sugar cane fire	Damage of sugar cane field (Estimated acres)	Number of sugar cane fire	Damage of sugar cane field (Estimated acres)
2014	January	17	21	5	4	12	17
	February	14	25	2	18	12	7
	March	55	95	43	89	12	6
	April	90	5	80	5	10	-
	May	133	278	131	277	2	1
	June	350	1,540	347	1,526	3	14
	July	366	2,266	361	2,227	5	39
	August	439	3,480	416	3,233	23	247
	September	477	4,222	441	3,954	36	268
	October	489	2,777	405	2,460	84	317
	November	256	1,142	197	974	59	168
	December	136	674	109	599	27	75
	Total	2,822	16,525	2,537	15,366	285	1,159
2015	January	19	64	12	51	7	13
	February	18	36	-	-	18	36
	March	55	75	-	-	55	75
	April	85	118	-	-	85	118
	May	75	159	-	-	75	159
	June	158	652	155	643	3	9
	July	225	848	223	842	2	6
	August	322	1,789	313	1,720	9	69
	September	465	2,567	423	2,352	42	215
	October	313	1,545	281	1,383	32	162
	November	230	781	189	680	41	101
	December	132	420	77	276	55	144
	Total	2,097	9,054	1,673	7,947	424	1,107

Figure 3 - Damage of sugar cane field by district, 2014 and 2015

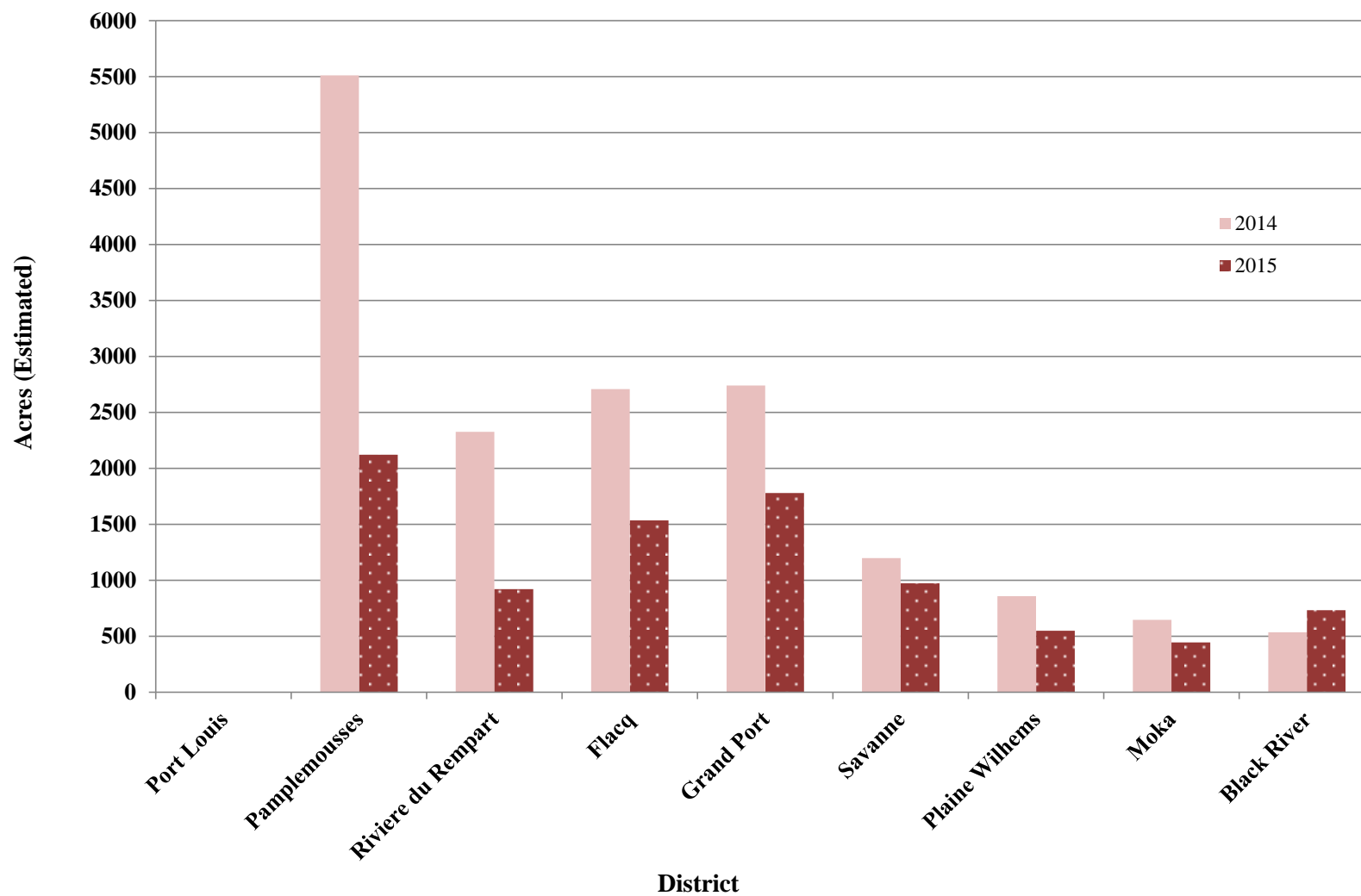


Table 5.1 - Number of special assistance attended by station, 2014 and 2015

Year	Fire Station	Total	Accumulation of water	Flushing		Rescue operation		Supply of water	Stand-by	Cutting of trees/branches	Assistance to other agencies	Other
				Road accident	Other	Human	Animal					
2014	Port Louis	492	92	27	175	18	14	78	16	37	24	11
	Triolet	225	35	15	57	7	4	12	26	46	6	17
	Piton	227	55	20	56	14	3	4	17	46	1	11
	Flacq	241	39	20	58	9	4	3	32	66	3	7
	Mahebourg	152	43	5	30	11	3	2	16	38	1	3
	Saint Aubin	214	40	5	59	7	5	3	41	51	2	1
	Coromandel	437	81	12	156	13	9	45	76	16	13	16
	Quatre Bornes	292	42	23	80	19	5	25	32	34	10	22
	Curepipe	356	79	25	95	21	16	5	35	45	15	20
	Tamarin	123	28	11	14	17	-	1	19	24	1	8
	Total	2,759	534	163	780	136	63	178	310	403	76	116
2015	Port Louis	539	128	29	181	14	17	37	24	61	31	17
	Triolet	294	111	17	33	6	11	18	30	54	8	6
	Piton	324	71	31	71	5	4	14	31	83	6	8
	Flacq	326	72	23	68	6	7	2	30	89	21	8
	Mahebourg	233	101	11	39	8	3	4	11	36	13	7
	Saint Aubin	263	80	26	59	4	5	3	16	63	4	3
	Coromandel	501	133	33	125	8	8	39	62	42	33	18
	Quatre Bornes	461	116	26	105	18	11	23	45	43	58	16
	Curepipe	502	197	38	91	17	21	9	29	63	15	22
	Tamarin	261	120	20	24	12	-	-	26	48	1	10
	Total	3,704	1,129	254	796	98	87	149	304	582	190	115

Table 5.2 - Number of special assistance attended by district, 2014 and 2015

Year	District	Total	Accumulation of water	Flushing		Rescue operation		Supply of water	Stand-by	Cutting of trees/branches	Assistance to other agencies	Other
				Road accident	Other	Human	Animal					
2014	Port Louis	426	101	21	146	16	12	56	12	26	24	12
	Pamplemousses	393	83	31	102	15	5	29	39	64	3	22
	Rivière du Rempart	162	18	10	49	9	4	9	10	43	4	6
	Flacq	245	30	18	61	12	4	2	36	71	3	8
	Grand Port	200	77	9	36	12	3	3	12	40	1	7
	Savanne	241	44	5	66	7	5	3	56	53	2	-
	Plaine Wilhems	702	119	39	219	40	25	59	58	65	31	47
	Moka	165	17	15	44	7	1	9	56	13	2	1
	Black River	225	45	15	57	18	4	8	31	28	6	13
	Total	2,759	534	163	780	136	63	178	310	403	76	116
2015	Port Louis	486	126	26	171	14	16	17	23	50	28	15
	Pamplemousses	417	102	30	81	6	10	20	44	103	10	11
	Rivière du Rempart	343	138	23	45	5	7	37	22	52	8	6
	Flacq	337	83	27	67	6	8	2	27	86	22	9
	Grand Port	312	150	15	51	8	5	7	15	40	13	8
	Savanne	277	88	26	65	5	4	2	19	62	3	3
	Plaine Wilhems	909	224	53	220	29	30	62	57	102	88	44
	Moka	179	31	21	31	5	4	2	64	17	2	2
	Black River	444	187	33	65	20	3	-	33	70	16	17
	Total	3,704	1,129	254	796	98	87	149	304	582	190	115

Table 5.3 - Number of special assistance attended by month, 2014 and 2015

Year	Month	Total	Accumulation of water	Flushing		Rescue operation		Supply of water	Stand-by	Cutting of trees/branches	Assistance to other agencies	Other
				Road accident	Other	Human	Animal					
2014	January	319	69	13	99	6	6	16	9	86	7	8
	February	294	7	10	76	12	8	12	46	92	10	21
	March	302	111	22	61	11	2	21	31	27	7	9
	April	245	62	12	57	10	5	16	35	30	6	12
	May	165	10	8	53	7	4	12	20	29	10	12
	June	145	4	14	57	11	6	9	18	9	5	12
	July	163	1	8	78	9	4	2	8	36	8	9
	August	179	9	13	70	15	3	5	27	26	-	11
	September	150	3	11	58	16	5	17	14	17	4	5
	October	187	8	13	67	12	6	29	40	5	3	4
	November	170	8	21	41	6	8	27	32	16	7	4
	December	440	242	18	63	21	6	12	30	30	9	9
	Total	2,759	534	163	780	136	63	178	310	403	76	116
2015	January	743	385	13	84	5	7	11	7	211	12	8
	February	423	169	19	124	4	6	20	17	37	15	12
	March	690	438	20	64	13	3	12	29	91	7	13
	April	178	13	14	47	3	7	17	23	31	12	11
	May	214	9	30	56	9	7	12	19	43	22	7
	June	201	12	28	44	8	7	6	24	44	17	11
	July	182	6	21	86	13	7	6	6	17	13	7
	August	157	8	29	34	8	9	2	28	12	17	10
	September	206	7	12	73	6	6	7	27	37	21	10
	October	239	37	17	73	12	10	12	32	24	16	6
	November	216	23	37	47	6	9	17	46	12	10	9
	December	255	22	14	64	11	9	27	46	23	28	11
	Total	3,704	1,129	254	796	98	87	149	304	582	190	115

Table 6.1 - Number of fire certificate applications received and certificate issued by district, 2014 and 2015

District	Fire certificate applications			Fire certificate issued ¹		
	Total	2014	2015	Total	2014	2015
Port Louis	245	127	118	283	178	105
Pamplemousses	195	112	83	161	52	109
Rivière du Rempart	143	65	78	148	52	96
Flacq	135	75	60	147	84	63
Grand Port	115	67	48	99	47	52
Savanne	63	40	23	88	62	26
Plaine Wilhems	467	243	224	278	40	238
Moka	139	69	70	152	77	75
Black River	137	81	56	171	95	76
Total	1,639	879	760	1,527	687	840

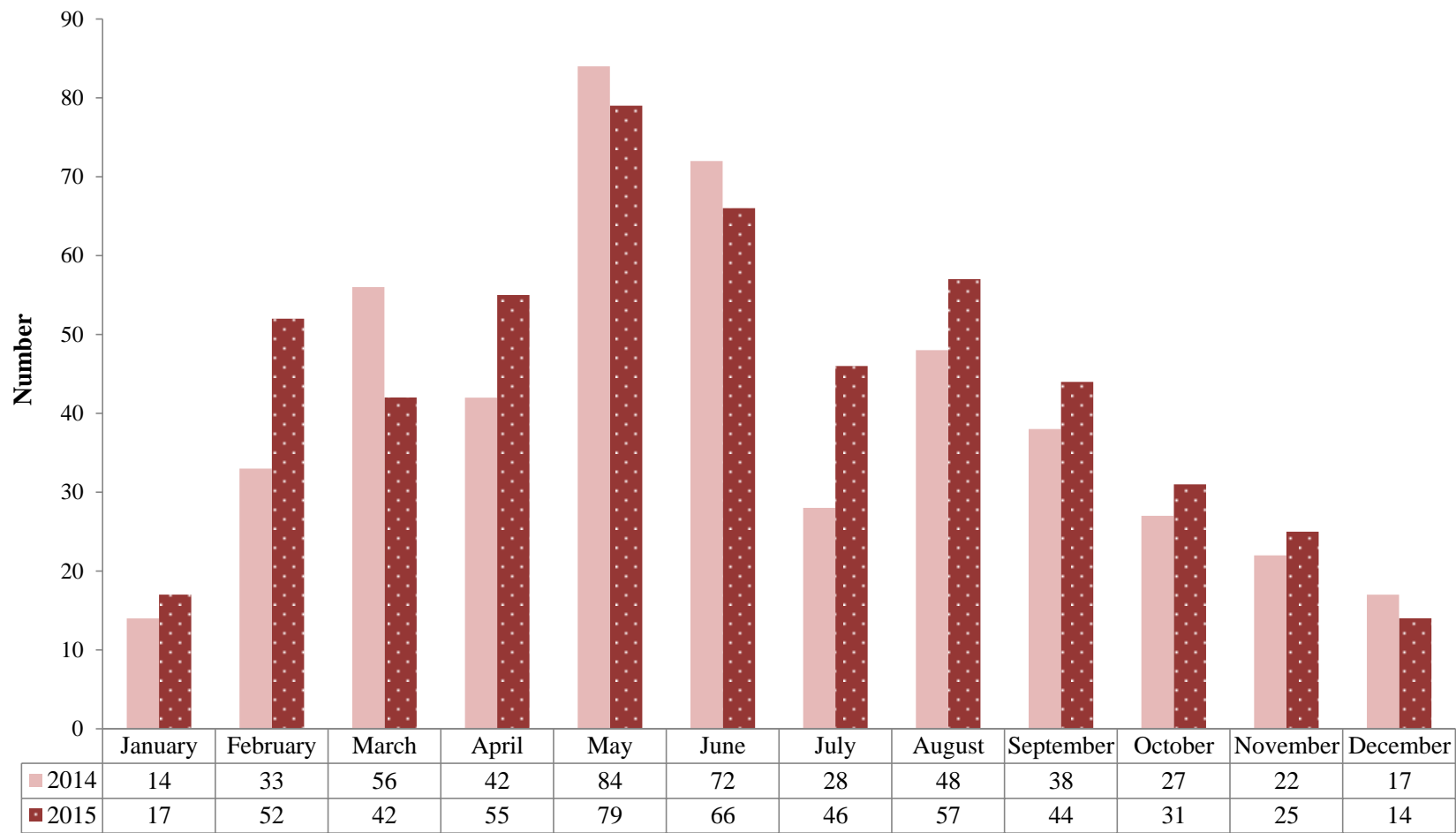
¹ Include applications made in previous years

Table 6.2 - Number of fire clearance applications received and clearance issued by district, 2014 and 2015

District	Fire clearance applications			Fire clearance issued ¹		
	Total	2014	2015	Total	2014	2015
Port Louis	314	139	175	415	279	136
Pamplemousses	407	208	199	263	54	209
Rivière du Rempart	261	98	163	214	57	157
Flacq	259	131	128	264	157	107
Grand Port	146	70	76	153	88	65
Savanne	155	87	68	154	89	65
Plaine Wilhems	727	312	415	482	75	407
Moka	172	60	112	213	122	91
Black River	244	99	145	259	123	136
Total	2,685	1,204	1,481	2,417	1,044	1,373

¹ Include applications made in previous years

Figure 4 - Number of fire and other emergency safety awareness campaigns, 2014 and 2015



Explanatory notes and definitions

Firecalls

These are turn outs (response) to any fire incident in buildings, vehicles, sugar cane and outside fires.

Structural fires

Structural fires include any fire inside, on, under or touching a construction for occupancy and use for a specific purpose.

Sugar cane

Sugar cane comprises standing cane and young shoot.

Special assistance

Special assistances include pumping of accumulated water, flushing, rescue operation and supply of water.

Fire certificate is issued to place of work:

Where more than:

- (i) 20 persons are expected to be present at any one time on ground floor; or
- (ii) 10 persons are expected to be present at any one time on first floor or elsewhere in the building other than ground floor
- (iii) When it is proposed to construct structural buildings
- (iv) Where certificate of registrations are issued by Mauritius Fire and Rescue Service such as filling station, spraying room, inflammable store, storage of calcium carbide, bulk depot, storage of liquefied petroleum gas above 500 kg

Fire clearance is issued to place of work:

Where not more than

- (i) 20 persons are expected to be present at any one time on ground floor; or
- (ii) 10 persons are expected to be present at any one time on first floor of a building or elsewhere other than on the ground floor
- (iii) Place for lodging accommodation for expatriate workers, guest house, tour residence
- (iv) Commercial places such as general retailer shop, barber shop, tour operator, sale of insecticide, pesticide and herbicide, sale of liquefied petroleum gas less than 500 kg

Symbol

Zero is denoted by '-'